

# TOTAL PROTECTION *PLUS*

MECHANICAL VEHICLE SERVICE CONTRACT

## 4 SUPERB COVERAGES

*Plus Three Great Optional Coverages*

### EXCLUSIONARY NOTED

The **Exclusionary Noted** plan is so extensive that there are too many covered parts to list here. This plan provides you with peace of mind for the continued performance of your vehicle – mechanical, electrical, advanced technology, specific exhaust, and lift kits, to name a few. Excluded items are listed in the “What is Not Covered” section.

### POWERTRAIN WRAP

The **Powertrain Wrap** coverage is designed to specifically provide protection for vehicles that come with or have an existing powertrain warranty. It wraps around your manufacturer’s factory or other existing powertrain warranty. You get the same great coverage as in Powertrain Plus, Exhaust Boost/Spark and Technology.



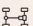


### POWERTRAIN PLUS

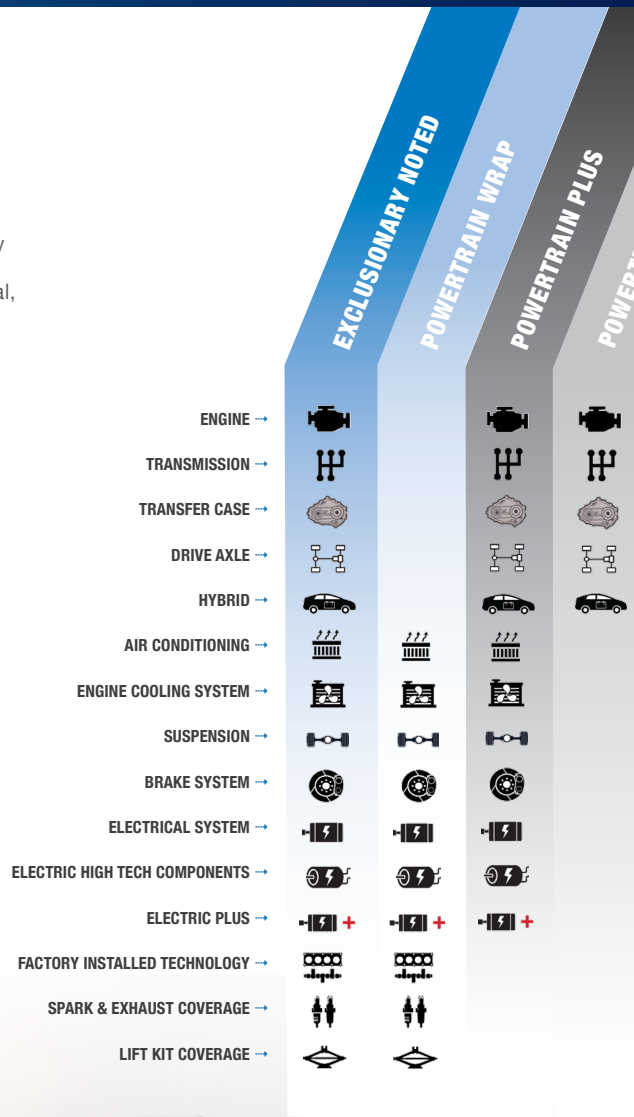
This coverages’ extensive level of protection includes all of the Powertrain additional:

- Engine Cooling System
- Factory Air Conditioning
- Suspension
- Fuel System
- Brake System
- Electrical Systems
- Electric High-Tech Components
- Electric Plus

### POWERTRAIN

Comprehensive stated coverage for these major drivetrain components:

-  Engine
-  Transmission
-  Drive Axle
-  Transfer Case
-  Hybrid Motor Components





# CLAIMS

TO START A CLAIM CALL

## 1.888.368.2302

Must call for authorization prior to any repairs being done, thank you!

### ROADSIDE BENEFITS *Included with ALL Coverage Levels*

**RENTAL CAR ALLOWANCE:** up to \$35 per day for a maximum of five (5) days.

**TRIP INTERRUPTION ASSISTANCE:** up to one hundred dollars (\$100) per day for a maximum of five (5) days.

**TOWING ASSISTANCE:** your vehicle will be towed to the closest licensed service facility within 25 miles.

**FLAT TIRE ASSISTANCE:** removal of your flat tire and replaces with your spare.

**FUEL, OIL, FLUID AND WATER DELIVERY SERVICE:** up to a 3 gallon supply of the fluids needed in the case of emergency

**LOCK-OUT ASSISTANCE:** if your keys are locked in the covered vehicle, service will be provided to gain re-entry.

**BATTERY ASSISTANCE:** if battery failure occurs, a jump start will be provided to start your vehicle.



### SUPPLEMENTAL COVERAGE *Available*

*Included with Exclusionary Noted*

**LIFT KIT COVERAGE** Available to trucks and SUV's with a lift kit up to 6 inches.

**TECHNOLOGY** Coverage for the vehicle manufacturer's installed Hands Free, Voice Activated Accessories, Back-up Sensors, Video Display Screen, Blind Spot Sensors, side mirror motor sensors, rear view mirror light adjusting auto sensor, Power Tailgate Sensor and Tailgate Lock Sensor, Illuminated Vanity, Mileage Computer, Emergency Trunk Release, Automatic Climate Control Programmer, Navigation System, TV/VCR/DVD Players, WiFi or Bluetooth integrated router, Wireless or USB plug-ins, Cruise control sensors.

#### EXTRA BOOST SPARK AND EXHAUST COVERAGE

Coverage available for spark plug wires, spark plug boot and connectors, vapor emission canister, crankcase ventilation valve, distributor cap, distributor motor, smog pump, catalytic converter, muffler and exhaust pipes, high voltage vehicle drive batteries and the gas cap.

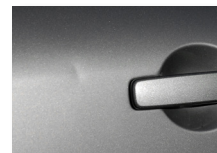
## TOTAL PROTECTION *PLUS*

*Includes Three Great Optional Coverages*

### ENHANCED COVERAGES *Optional*

**PDR & WINDSHIELD REPAIR** Covers repair of windshield star cracks no greater than two (2) inches in diameter. Paintless dent repair extends coverage to dents that are no greater than 4 inches in diameter. PDR includes hail damage benefit up to \$1000 where applicable by state law.

**KEY REPLACEMENT** Coverage includes replacement of all key(s) on your key ring including the key/transponder and any applicable programming if the key(s) are lost, stolen, or damaged.



PAINTLESS DENT REPAIR (PDR)



WINDSHIELD PROTECTION



KEY FOB REPLACEMENT

\*California: The purchase of an add-on is not required and the consumer can purchase or lease a vehicle without the add-on.